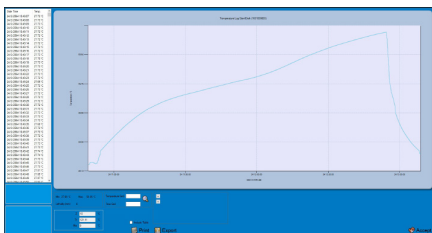


## HIGH TEMPERATURE DATA LOGGER MicroW XL HP2



### Features

- Prevent up to 250°C maximum 134 minutes
- With different lengths rigid probe for penetration
- Completely food grade and waterproof
- All software calculate lethality value (F0, PU, A0 ecc.)
- long live battery and user replaceable battery (software shows battery status)
- Very easy to deploy in any type of package
- Accredia (NIST equivalent) traceable calibration certificate included
- Application for Sterilisation, Pasteurisation, Food and Beverage, Pharmaceutical, Healthcare, Medical, Cosmetics, Laboratories, Validation

### Technical data

**Temperature range :** -40...+250°C

-40...+140°C (permanently)

+141...+250°C (max. 134 minutes)

**Accuracy :** ± 0.1°C (valid in the calibration range)

**Accuracy (Option) :** ± 0.05°C (high accuracy calibration)

**Resolution :** 0.01 °C

**Memory capacity :** 20,224 reading

**Battery type :** high temperature Lithium battery

**Battery life (@different interval) :** more than 5 years @ 30 seconds or 6 months @ 1 second (17,000,000 acquisitions @ 1 second step continuously (calculated time @25°C)). Storage or operation above +50°C significantly reduces battery life.

**Interval :** 1s...24hr

**Material :** Strainless steel

**Operate system :** Windows 10, 11 (32/64 bit)

**Exporting :** PDF, Excel

**Dimension :** Φ67 x 222h mm

**Weight :** 843g

**Protection type :** IP68

### Ordering code

MicroW XL HP2

**100 :** Probe length 58 mm

**150 :** Probe length 108 mm

**xx :** Customize Probe length  
58...138 mm

[www.omi.co.th](http://www.omi.co.th)

**Omega Measuring Instrument Co., Ltd.**

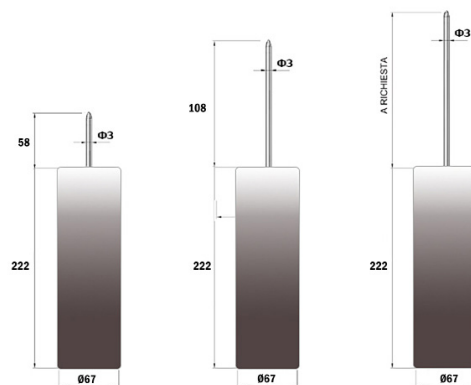
Tel : 02-105-4676

Fax : 02-903-0080 ext. 6867

Email : info@omi.co.th

Line : @omith

### Drawing



unit : mm

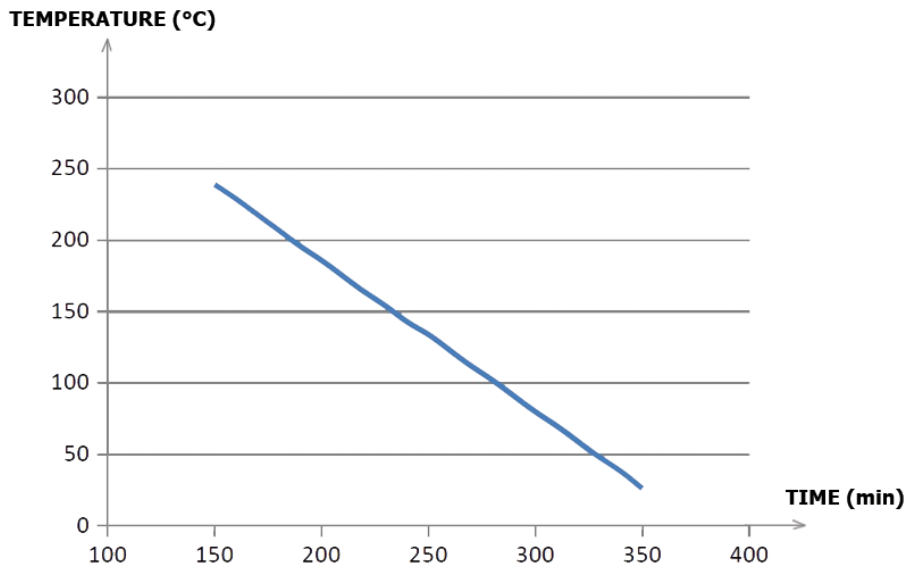
# HIGH TEMPERATURE DATA LOGGER MicroW XL HP2



Temperature (°C)	Time (min)
150	239
160	229
170	218
180	207
190	196
200	186
210	175
220	164
230	154
240	143
250	134

**Listed specifications** can be used to determine maximum allowable times for the S-MicroW XL HP2 at different temperature range. The data logger must be at ambient temperature (approximately 25 °C) before being placed in extreme temperature environment. After using it, the data logger should be placed in a water bath (approximately 25 °C) for at least 15 minutes to allow it to cool. Failing to do this may allow heat trapped to potentially unsafe levels.

**The relative of temperature and time's data logger**



[www.omi.co.th](http://www.omi.co.th)

**Omega Measuring Instrument Co., Ltd.**  
 Tel : 02-105-4676  
 Fax : 02-903-0080 ext. 6867  
 Email : info@omi.co.th  
 Line : @omith

## HIGH TEMPERATURE DATA LOGGER MicroW XL HP2

### Accessories

These are necessary equipments that using with products and increase efficiency.

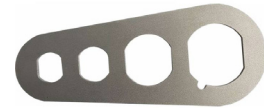
**DiskInterface HS :** is the connection bay used for downloading data and programming all models of high temperature data loggers



**Universal Multibay :** is the multiple connection bay used for downloading data and programming all models of high temperature data loggers. It allows to connect up to 5 data loggers of each supported model to be programmed and downloaded at the same time.



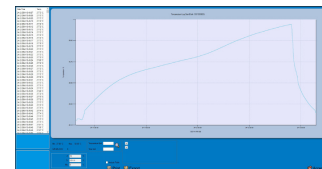
**TS17MU :** use to open data loggers for battery replacement.  
*Note : For all of **sterilDisk** model, need **2 items** for opening*  
*For **others model**, need only **1 item** for opening*



**TS18SMWXLBK :** Battery and O-ring can be used in all type of S-MicroW XL. if used below -30°C ,battery life will be highly reduced.



**SPD Software (FREE) :** It allows to start the devices setting the start delay, mission duration, notes. After download data are then displayed on graph, with zoom function, and table, exportable in Excel.



**TS Manager Software :** it allowed to do everything as a SPD software and has more functions such as multi-user, having login and password, Synchronized data table with statistics, etc. Downloadable from Tecno soft website and works with its hardware protection key only.



[www.omi.co.th](http://www.omi.co.th)

**Omega Measuring Instrument Co., Ltd.**

Tel : 02-105-4676

Fax : 02-903-0080 ext. 6867

Email : [info@omi.co.th](mailto:info@omi.co.th)

Line : @omith